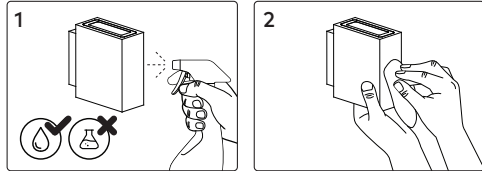


Cleaning

Warning: Before cleaning, disconnect from mains supply and allow luminaire to cool.



Disposal

Ensure correct disposal of this product (waste electrical and electronic equipment).



Corrosion Protection

It is important to note that care must be taken during installation or maintenance to ensure that the surface of the luminaire is not damaged. Any damage, which is exposed to moisture will result in corrosion occurring.

Please also note that any chemical applications on the luminaire or chemical contact via installation will cause corrosion of the surface of the luminaire and will void the warranty.

Ambient Conditions

Recommended to install in an ambient temperature <35°C.



Echo

WALL LIGHT

Base Codes	Echo 600 12W ECHO0600	Echo 900 20W ECHO0900	Power 12 20 Watts			
	Class I 220–240V ~ 50/60Hz	IP Rating 65	Material Aluminium	Install Person/s 1x		

CAUTION – This product must be installed by a qualified installer
Please read instruction manual carefully before installing luminaire

Surge Protection
For comprehensive protection of a luminaire against electrical surges, surge protection shall be installed on the mains supply where required to protect luminaires and drivers from transient voltage damage.

For warranty information visit unios.com/warranty

Please read these installation instructions carefully before installing this product. This product must be installed and maintained by a suitably qualified person/s in compliance with the latest applicable regulations and relevant legislation. Unios does not warrant any claim based on defects or damage caused by misuse, improper installation, improper operation and/or modifications carried out by the purchaser or third parties. This product shall not be used as a 'working light' during construction. This will result in the warranty of the product to be void. For warranty duration, please refer to the data sheet.

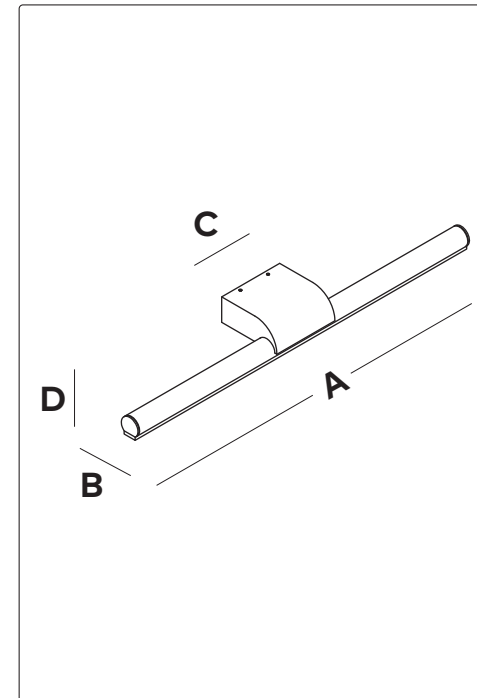
Sizing Variations

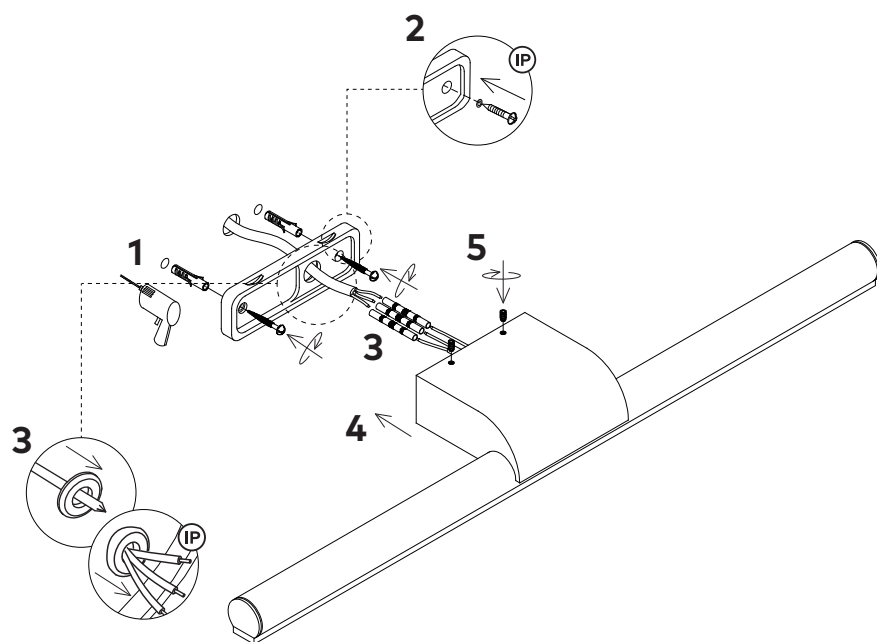
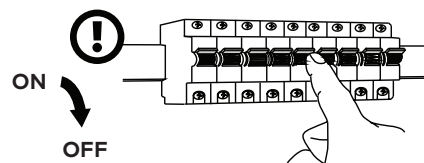
Product Code	A	B	C	D
ECHO0600	600	66	105	56
ECHO0900	900	81	130	61

All measurements are in millimetres.

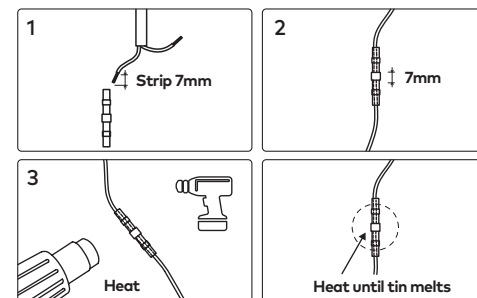
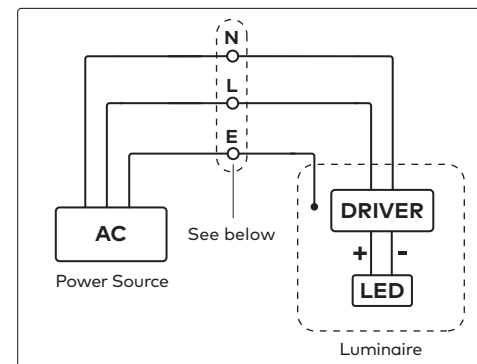
Parts

 1x Allen Key	 2x Plugs	 2x Screws
 3x Heatshrink Solder Joiners	 2x Seal Washer	





Wiring



Driver Compatibility

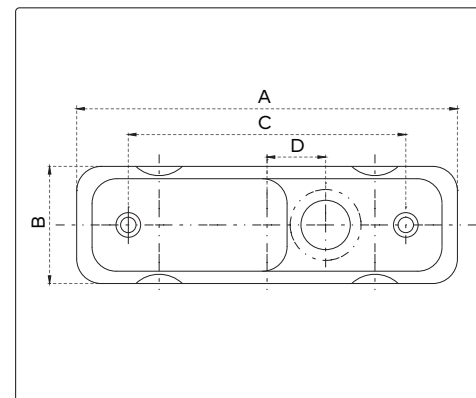
Product Code	Output Power	Driving Current	Typical Vf
ECHO0600	12W	300mA	39V
ECHO0900	20W	500mA	39V

Luminaire to be paired with Unios or Unios approved driver.

Dimming

This luminaire can not be dimmed.
Specific DALI option available.

Mounting Plate



Product Code	A	B	C	D
ECHO0600	98.5	33.5	70	15
ECHO0900	123.5	38	90	19

All measurements are in millimetres.