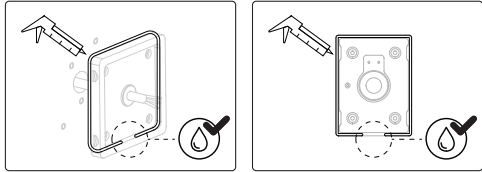


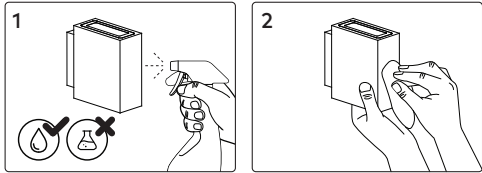
IP65/66 Installations

To ensure a complete seal around the mounting area, an exterior grade caulk must be used around the perimeter of the back of the mounting plate. **Do not caulk bottom of mounting plate to ensure sufficient drainage.**



Cleaning

Warning: Before cleaning, disconnect from mains supply and allow luminaire to cool.



Disposal

Ensure correct disposal of this product (waste electrical and electronic equipment).



Corrosion Protection

It is important to note that care must be taken during installation or maintenance to ensure that the surface of the luminaire is not damaged. Any damage, which is exposed to moisture will result in corrosion occurring.

Please also note that any chemical applications on the luminaire or chemical contact via installation will cause corrosion of the surface of the luminaire and will void the warranty.

Ambient Conditions

Recommended to install in an ambient temperature <35°C.



Vespa G2

WALL LIGHT

Base Codes	Small VESP0018	Large VESP0036	Power 18 36 Watts	
	Class I 220–240V ~ 50/60Hz	IP Rating 65	Material Aluminium	Install Person/s 1x

CAUTION – This product must be installed by a qualified installer
Please read instruction manual carefully before installing luminaire

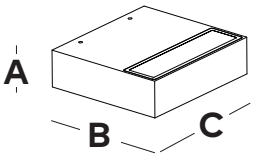
Surge Protection
For comprehensive protection of a luminaire against electrical surges, surge protection shall be installed on the mains supply where required to protect luminaires and drivers from transient voltage damage.

For warranty information visit unios.com/warranty

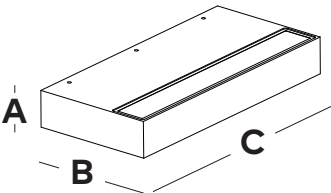
Please read these installation instructions carefully before installing this product. This product must be installed and maintained by a suitably qualified person/s in compliance with the latest applicable regulations and relevant legislation.

Unios does not warrant any claim based on defects or damage caused by misuse, improper installation, improper operation and/or modifications carried out by the purchaser or third parties. This product shall not be used as a 'working light' during construction. This will result in the warranty of the product to be void. For warranty duration, please refer to the data sheet.

VESP0018



VESP0036



Sizing Variations

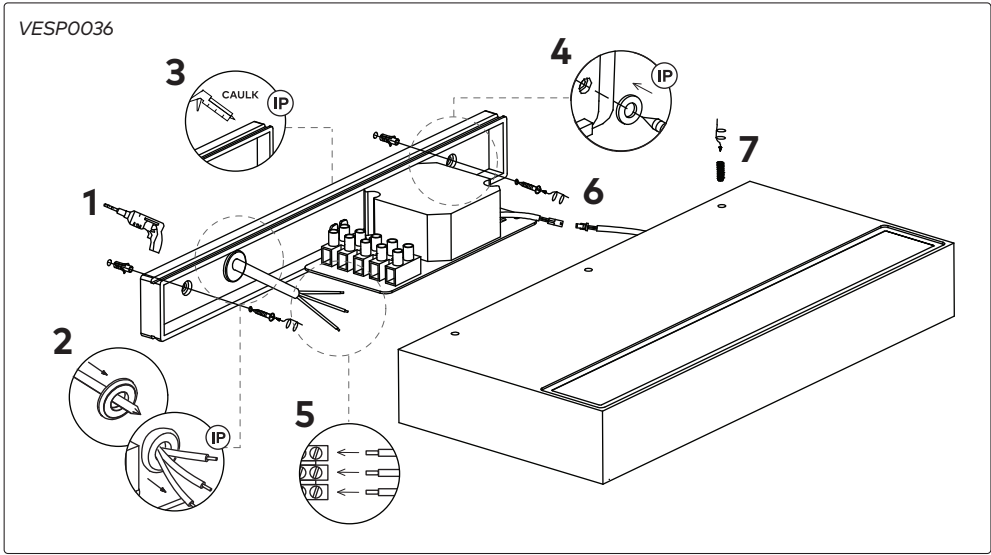
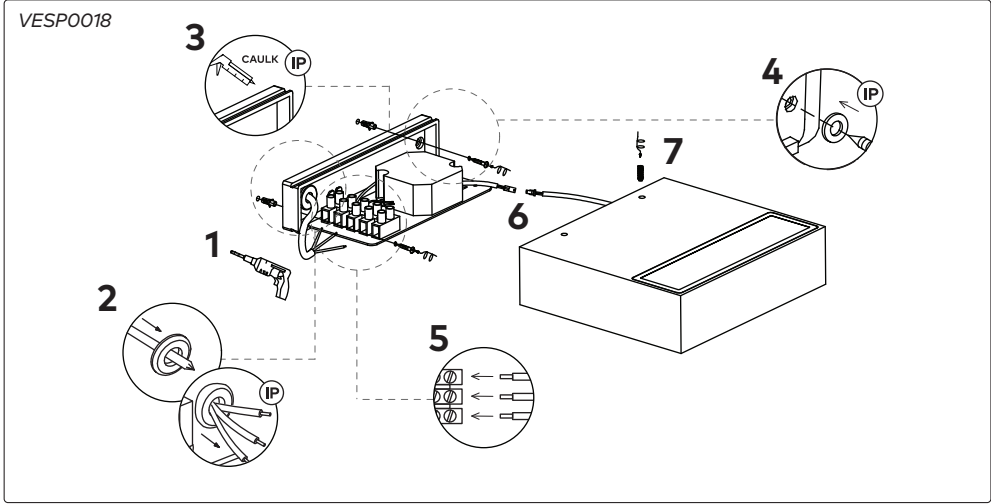
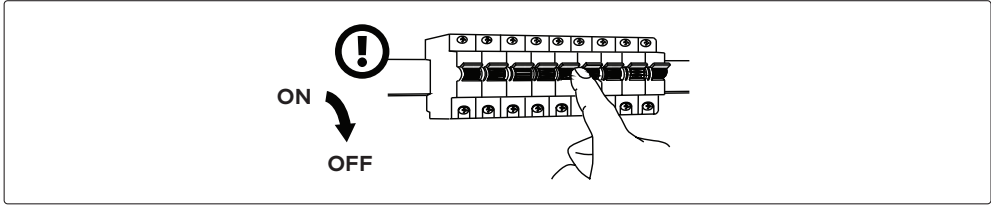
Product Code	A	B	C
VESP0018	50	156	173
VESP0036	50	156	332

All measurements are in millimetres.

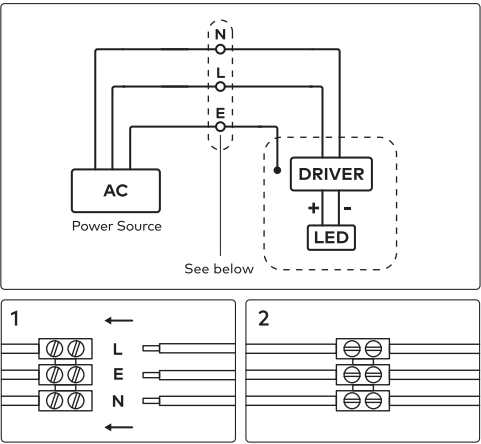
Parts

 1x Allen Key	 2x Wall Plugs	 2x Wall Screws
 2x Seal Washers		

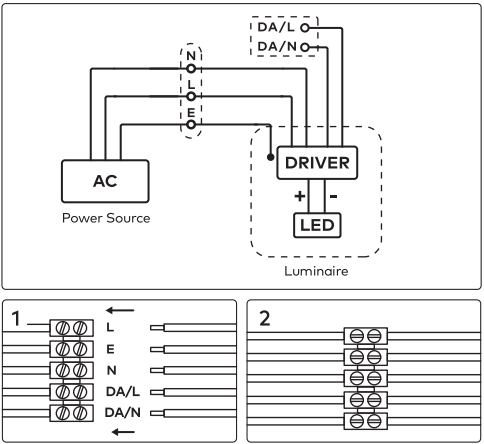




Wiring



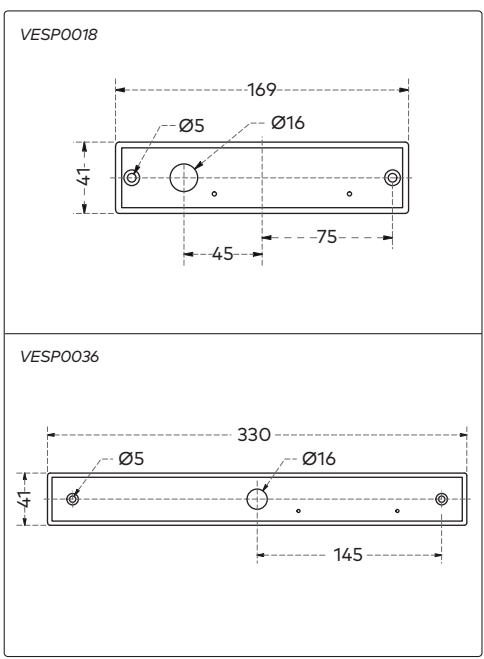
Wiring (Built-in DALI)



Driver Compatibility

Product Code	Output Power	Driving Current	Forward Voltage
VESP0018	18W	500mA	36-38V
VESP0036	36W	1000mA	36-38V

Mounting Plate



All measurements are in millimetres.

